

Outpost Packet Message Manager on Linux



Mark Phillips, NI2O March 2023

Table of contents

1 Abstract	2
2 Assumptions	2
3 Install Required software	2
4 Install Outpost Packet Message Manager	2

1 Abstract

Outpost Packet Message Manager is a Windows only software package capable of handling various Packet Radio email and bulletin messages. It can communicate with all the known messaging systems in use with Packet Radio today. This article explains how to install OPM onto your Linux machine.

2 Assumptions

Familiarity with Debian Linux

3 Install Required software

Full graphical X86 or X86-64 based Linux distro (not 'lite') (not Raspberry Pi)

PlayonLinux 'sudo apt install playonlinux'

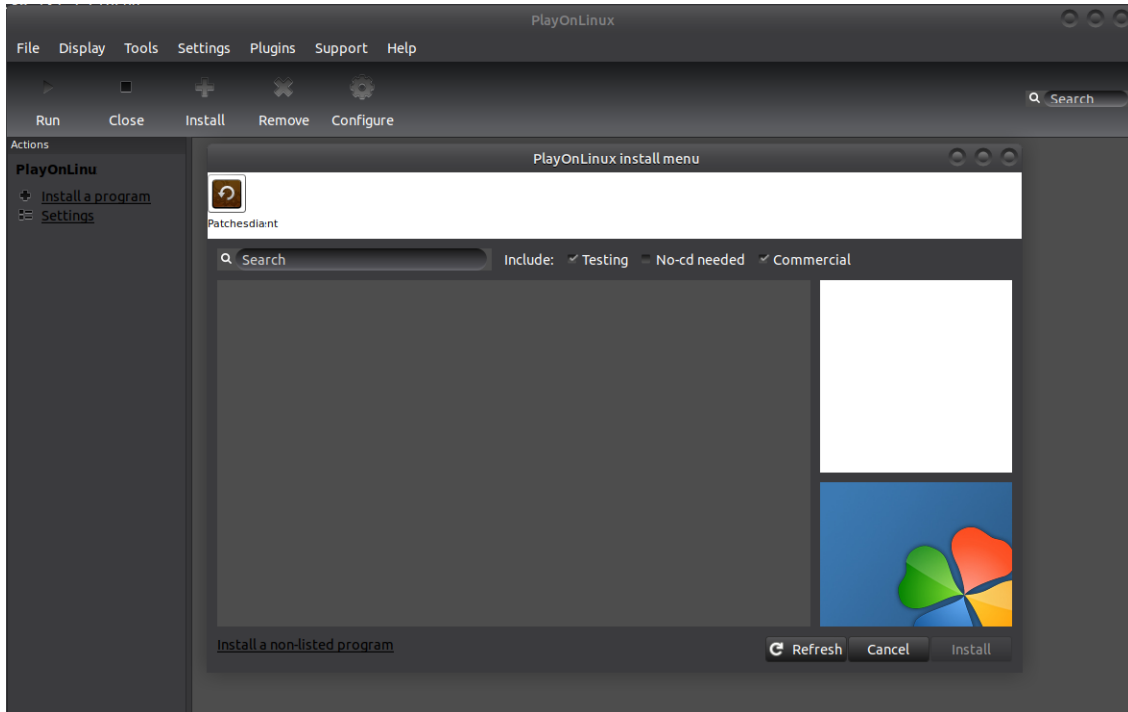
Wine32 'sudo apt install wine32'

Wine64 'sudo apt install wine64'

4 Install Outpost Packet Message Manager

Having installed the required software listed above download the latest windows install file from <https://www.outpostpm.org/index.php?content=downloads>

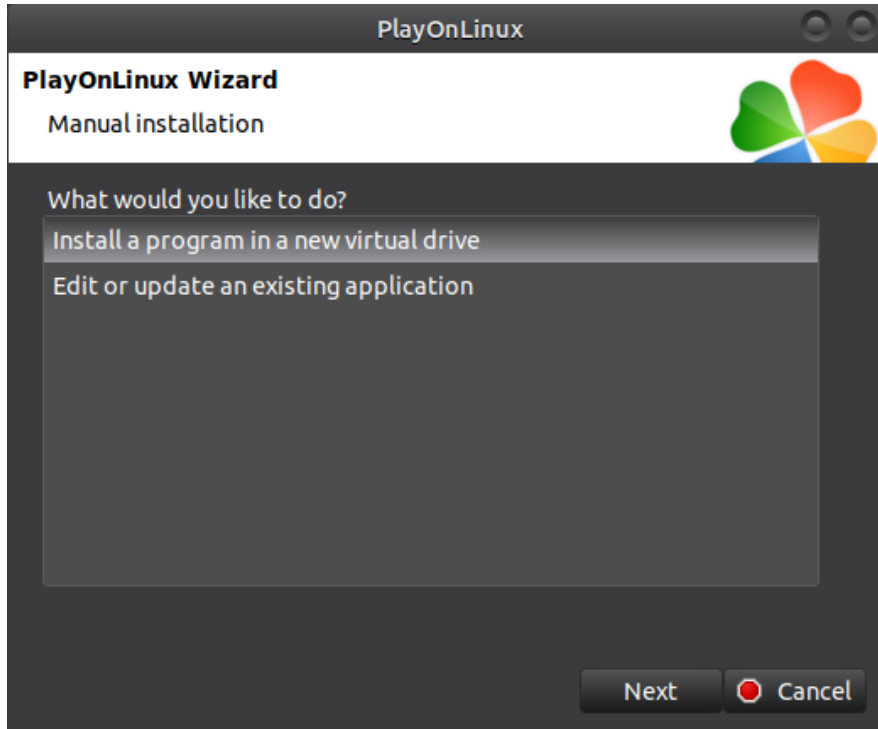
Start PlayonLinux. From the 'Actions' menu on the left side select 'Install a Program'.



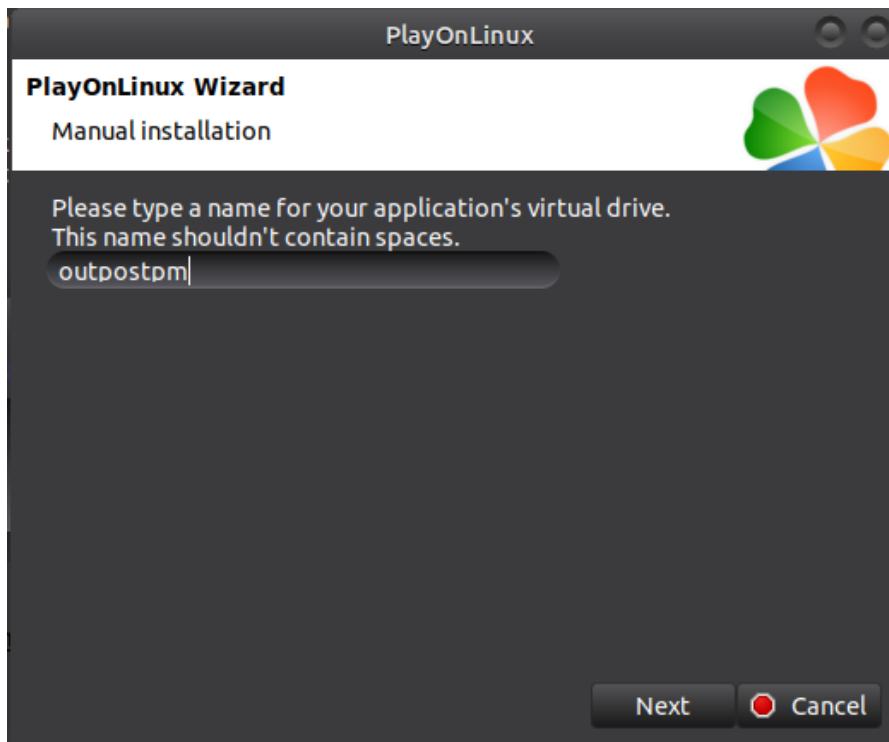
Then select 'Install a non-listed program'



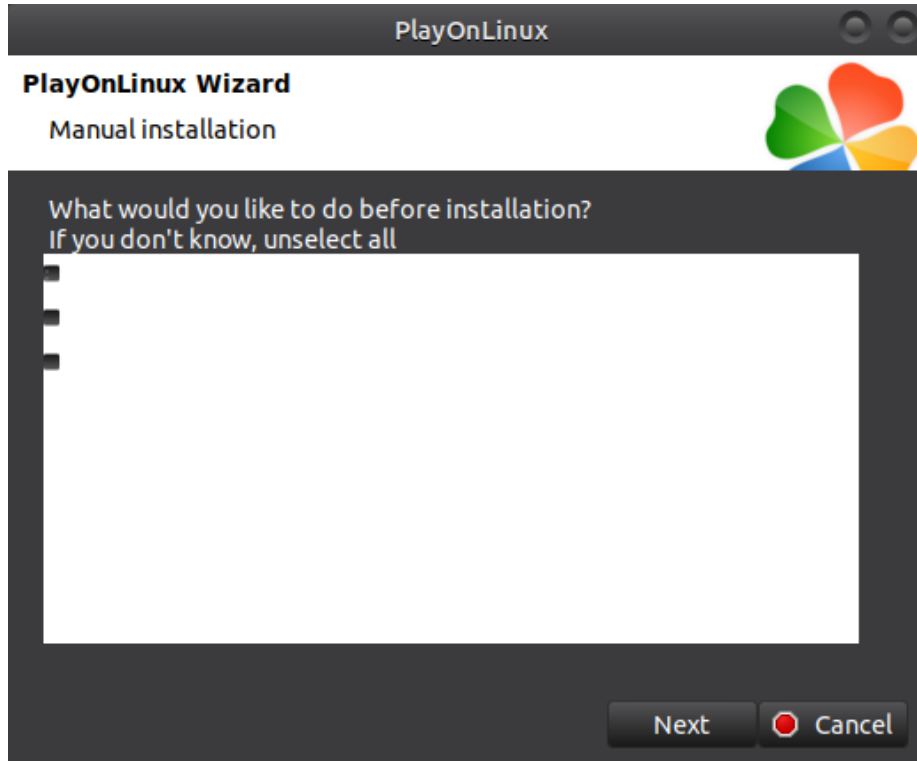
Click next



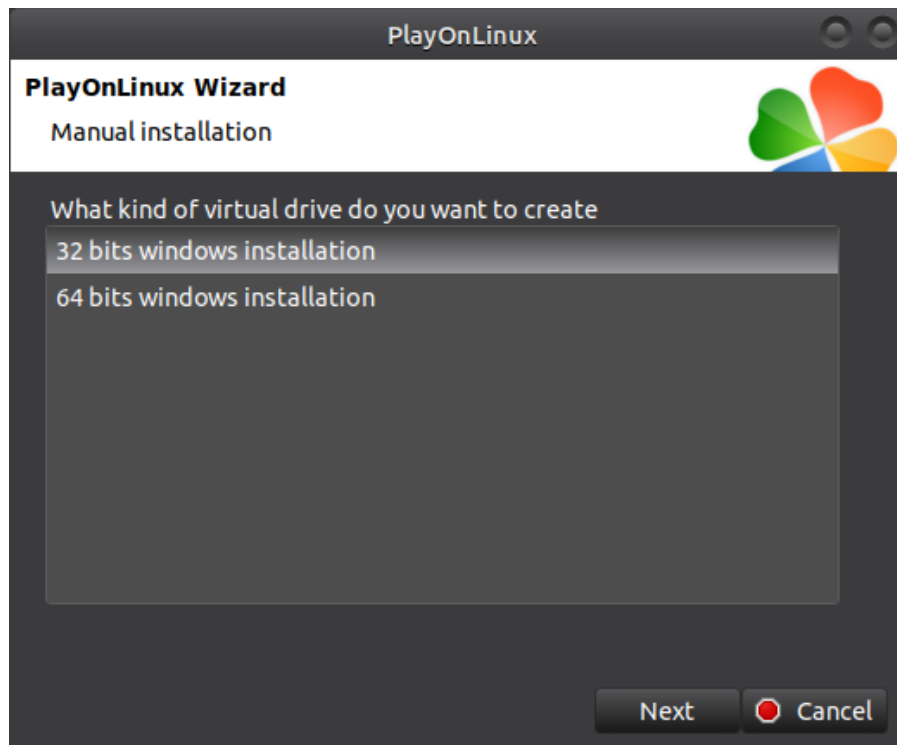
Install a program in a new virtual drive



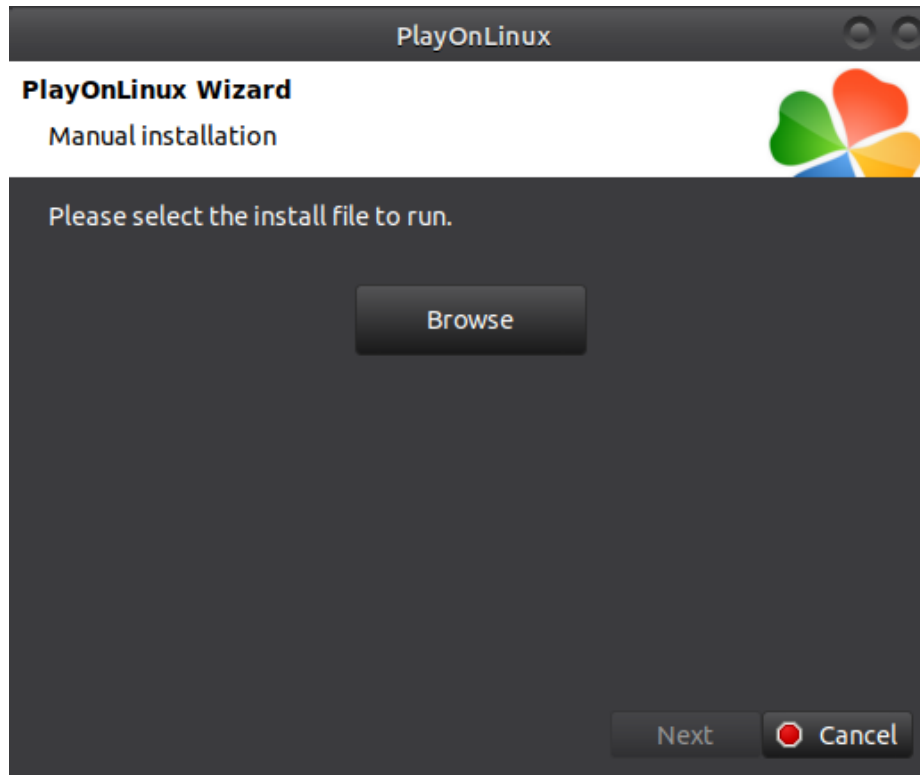
Give the virtual drive a name. Click next



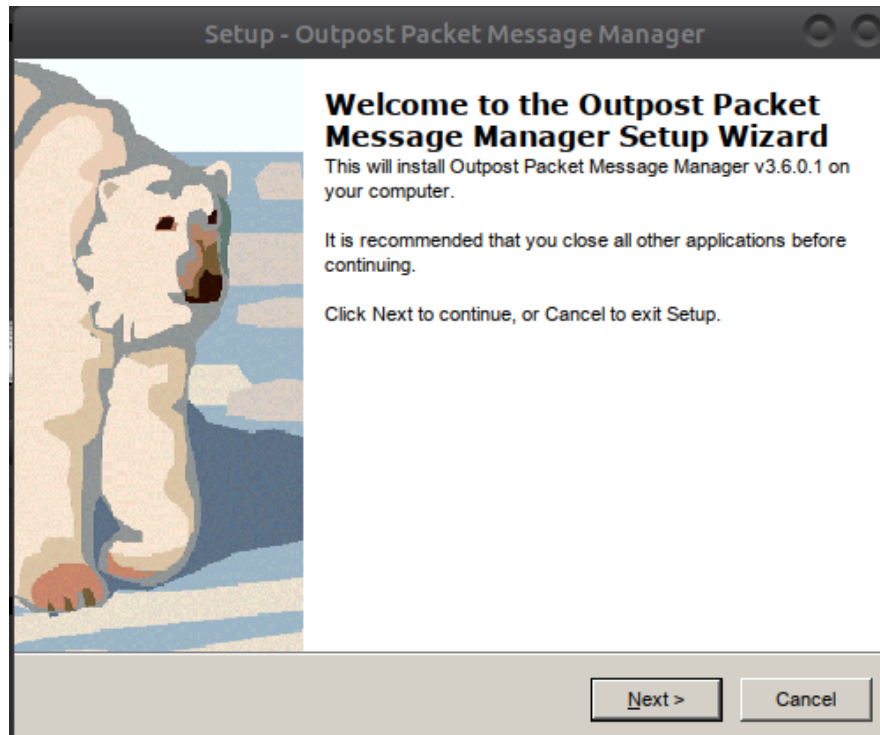
Click Next



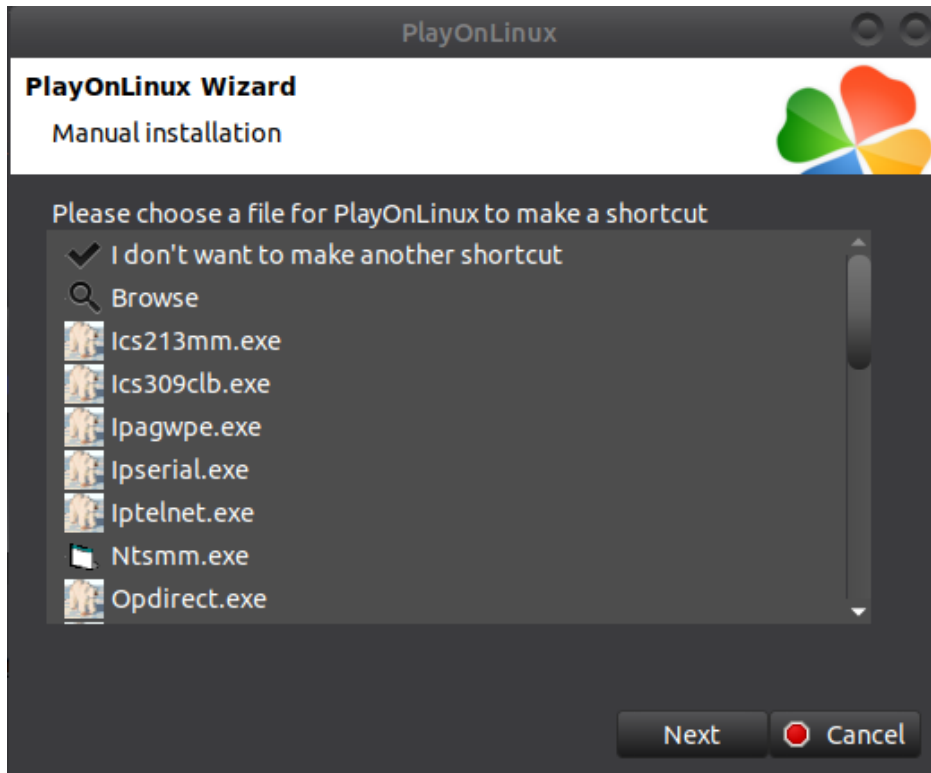
Click Next. Wait while the drive gets set up



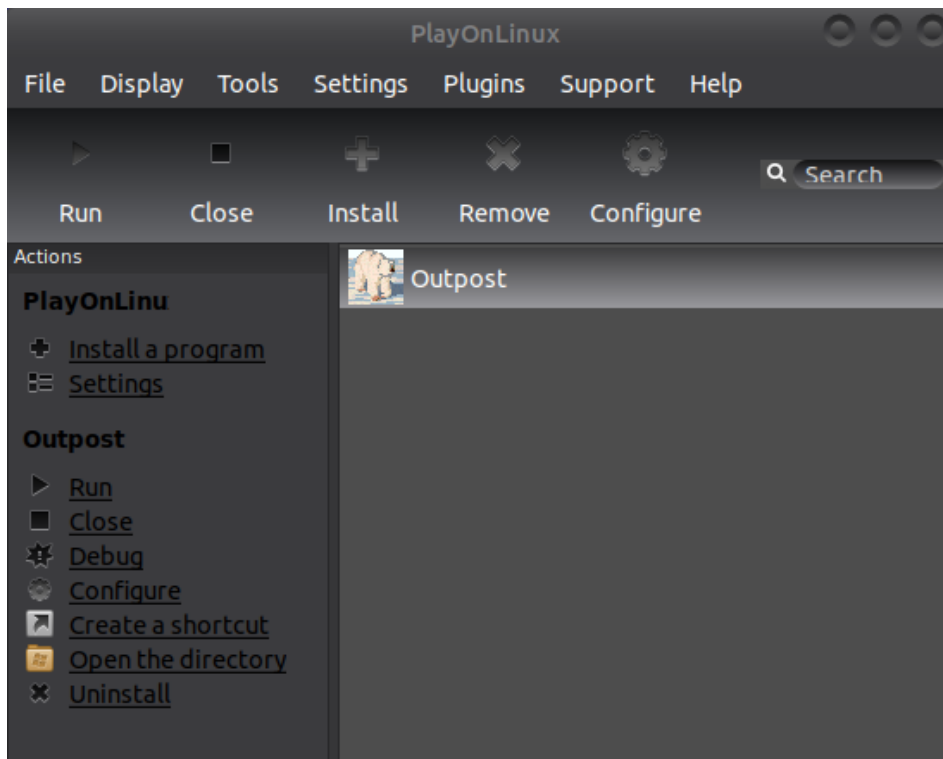
Browse to your previously downloaded Windows OPM installer file then click next



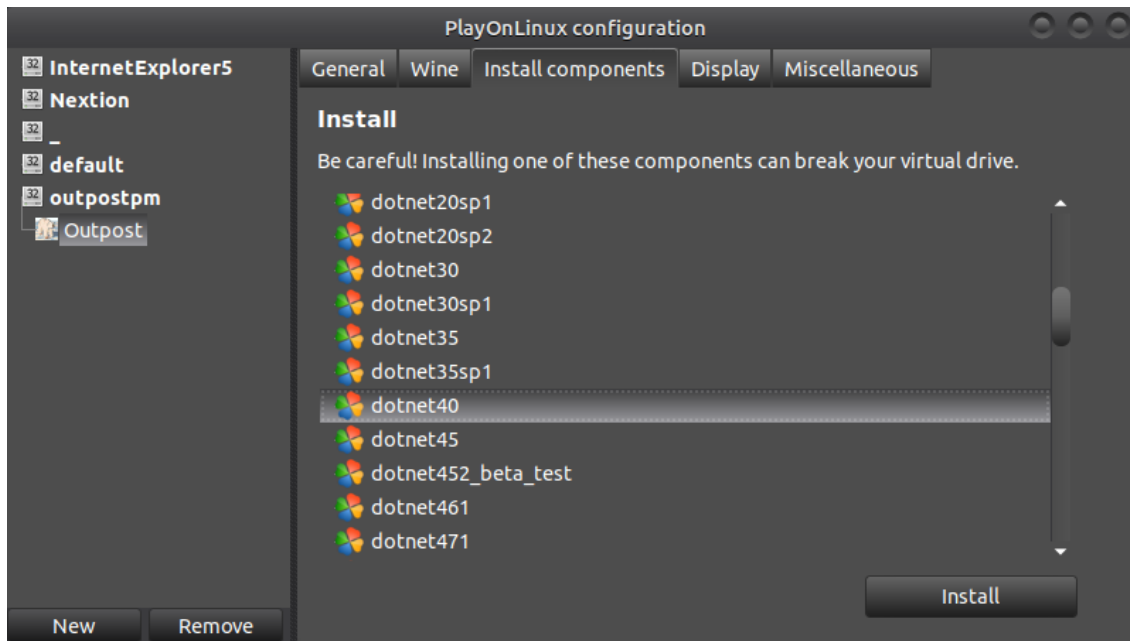
All being well the installer should fire up. Follow wizard through to the end as you would on Windows



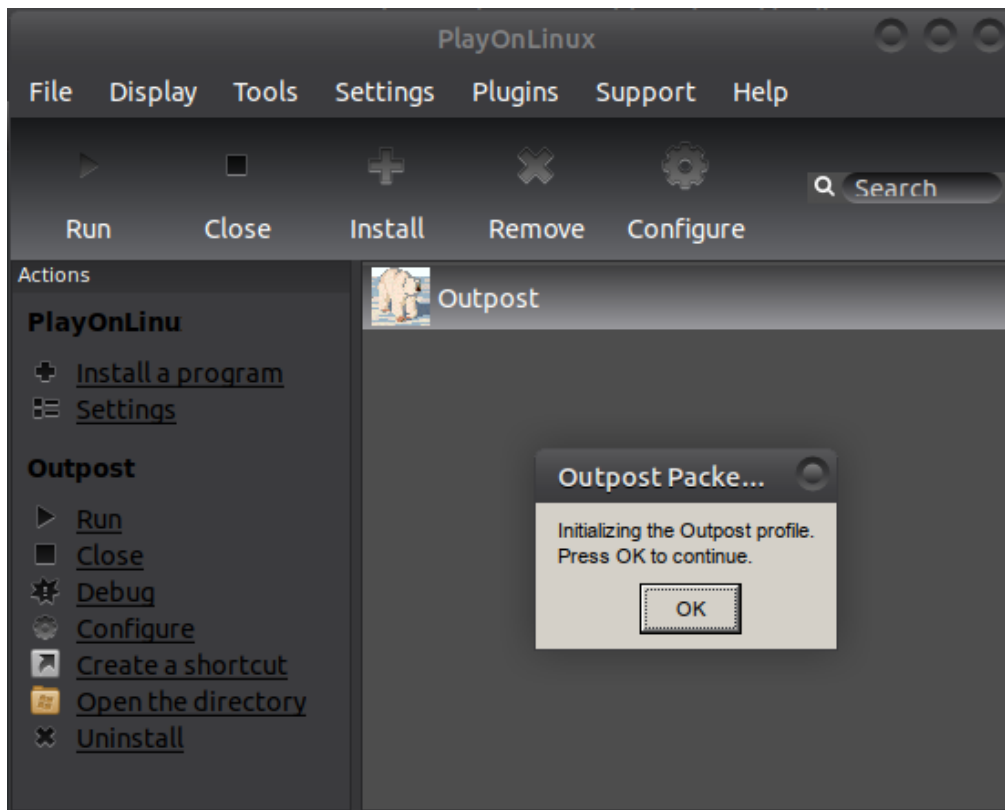
Select 'outpost.exe' from the list. Click next
Select 'I don't want to make another shortcut'. Click next



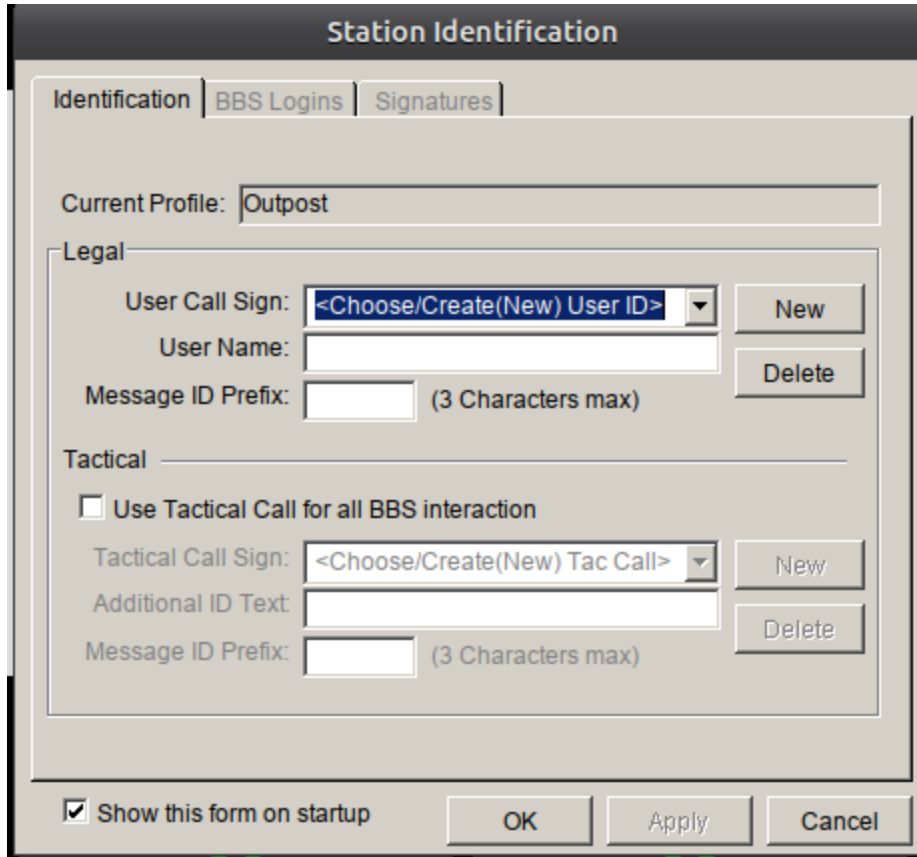
Click on Outpost icon and then configure from the left menu



From the 'Install Components' tab select 'dotnet40' and click install. After install select 'vbrun6' then press install



Click the outpost icon and then click run from the left menu



Configure Outpost as you would for Windows.

